

SERVO SYSTEM MED BORSTLÖS SERVOMOTOR Ø40-60MM 48V 30-200W

Kompakt Servomotor

R2GA04003F
48VDC, 30W, 3000RPM

- Puls styrning
- Extremt kompakta
- 17 bitars pulsgivare
- Hög IP klass IP67

Produktbeskrivning

DC servosystem med borstlös motor i effektstorlekarna 30-200 W.

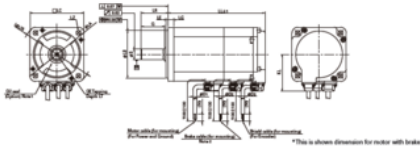
Mycket hög precision och prestanda.



SANYO DENKI

TEKNISK DATA

Axeldiameter	6 mm
Frontstorlek	40x40
IP-klass	IP67
Längd	51,5 mm
Matningsspänning	48 V DC
Max. moment	0,37
Nominell hastighet	3000 rpm
Nominellt moment	0,098
Omgivningstemperatur till	40 °C
Vikt	0,35 kg

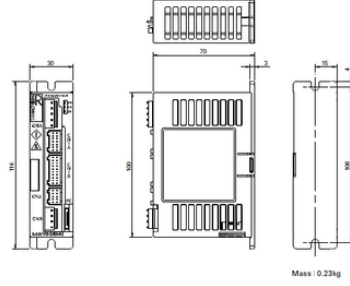


R2 Servo Motor High Efficiency and Low Ripple (Medium Inertia)

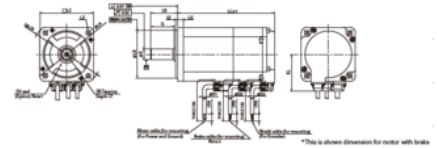
MODEL	Battery backup method				Nominal torque (with brake) / Max. torque (with brake) / Max. torque (without brake)											
	5V	6V	7.5V	9V	U _G	U _R	U _A	U _B	U _C	U _D	U _E	U _F	U _G	U _H		
RC_10000 AC0	51.5	57.5	56.5	52.5	0	35.4	40	20.0-0.021	2.5	58	40	2-49.5	25			
RC_10000 AC1	56.5	52.5	51.5	57.5	0	35.4	40	20.0-0.021	2.5	58	40	2-49.5	25			
RC_10000 AC2	71	100	77	115	0	35.4	40	20.0-0.021	2.5	58	40	2-49.5	25			
RC_10000 AC3	58.5	52.5	55.5	58.5	0	44.4	70	20.0-0.021	3	62	60	4-98.5	25			
RC_10000 AC4	58.5	57.5	70.5	52.5	0	44.4	70	20.0-0.021	3	62	60	4-98.5	25			
RC_10000 AC5	69.5	102	73.5	100	0	54.4	90	20.0-0.021	3	100	60	4-98.5	25			
RC_10000 AC6	56.5	123.5	102.5	136.5	0	44.4	70	20.0-0.021	3	62	60	4-98.5	25			
RC_10000 AC7	78.5	114	89.5	121	0	54.4	90	20.0-0.021	3	100	60	4-98.5	25			
RC_10000 AC8	107.5	142	114.5	150	0	54.4	90	20.0-0.021	3	100	60	4-98.5	25			
RC_10000 AC9	137	185	157	190	0	54.4	90	20.0-0.021	3	100	60	4-98.5	25			

MODEL	U _G	U _R	U _A	U _B	U _C	U _D	U _E	U _F	U _G	U _H
RC_10000 AC0	0	0	0	0	0	0	0	0	0	0
RC_10000 AC1	0	0	0	0	0	0	0	0	0	0
RC_10000 AC2	0	0	0	0	0	0	0	0	0	0
RC_10000 AC3	0	0	0	0	0	0	0	0	0	0
RC_10000 AC4	0	0	0	0	0	0	0	0	0	0
RC_10000 AC5	0	0	0	0	0	0	0	0	0	0
RC_10000 AC6	0	0	0	0	0	0	0	0	0	0
RC_10000 AC7	0	0	0	0	0	0	0	0	0	0
RC_10000 AC8	0	0	0	0	0	0	0	0	0	0
RC_10000 AC9	0	0	0	0	0	0	0	0	0	0

■ Servo Amplifier



Mass : 0.23kg

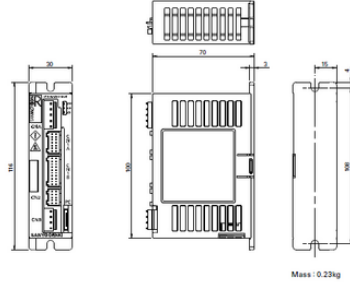


R2 Servo Motor High Efficiency and Low Ripple (Medium Inertia)

MODEL	Battery backup method				Nominal torque (with brake) / Max. torque (with brake) / Max. torque (without brake)											
	5V	6V	7.5V	9V	U _G	U _R	U _A	U _B	U _C	U _D	U _E	U _F	U _G	U _H		
RC_10000 AC0	51.5	57.5	56.5	52.5	0	35.4	40	20.0-0.021	2.5	58	40	2-49.5	25			
RC_10000 AC1	56.5	52.5	51.5	57.5	0	35.4	40	20.0-0.021	2.5	58	40	2-49.5	25			
RC_10000 AC2	71	100	77	115	0	35.4	40	20.0-0.021	2.5	58	40	2-49.5	25			
RC_10000 AC3	58.5	52.5	55.5	58.5	0	44.4	70	20.0-0.021	3	62	60	4-98.5	25			
RC_10000 AC4	58.5	57.5	70.5	52.5	0	44.4	70	20.0-0.021	3	62	60	4-98.5	25			
RC_10000 AC5	69.5	102	73.5	100	0	54.4	90	20.0-0.021	3	100	60	4-98.5	25			
RC_10000 AC6	56.5	123.5	102.5	136.5	0	44.4	70	20.0-0.021	3	62	60	4-98.5	25			
RC_10000 AC7	78.5	114	89.5	121	0	54.4	90	20.0-0.021	3	100	60	4-98.5	25			
RC_10000 AC8	107.5	142	114.5	150	0	54.4	90	20.0-0.021	3	100	60	4-98.5	25			
RC_10000 AC9	137	185	157	190	0	54.4	90	20.0-0.021	3	100	60	4-98.5	25			

MODEL	U _G	U _R	U _A	U _B	U _C	U _D	U _E	U _F	U _G	U _H
RC_10000 AC0	0	0	0	0	0	0	0	0	0	0
RC_10000 AC1	0	0	0	0	0	0	0	0	0	0
RC_10000 AC2	0	0	0	0	0	0	0	0	0	0
RC_10000 AC3	0	0	0	0	0	0	0	0	0	0
RC_10000 AC4	0	0	0	0	0	0	0	0	0	0
RC_10000 AC5	0	0	0	0	0	0	0	0	0	0
RC_10000 AC6	0	0	0	0	0	0	0	0	0	0
RC_10000 AC7	0	0	0	0	0	0	0	0	0	0
RC_10000 AC8	0	0	0	0	0	0	0	0	0	0
RC_10000 AC9	0	0	0	0	0	0	0	0	0	0

■ Servo Amplifier



Mass : 0.23kg