

BOSCH AHC 12V

0390201900

- Högt startmoment
- Kompakt utförande

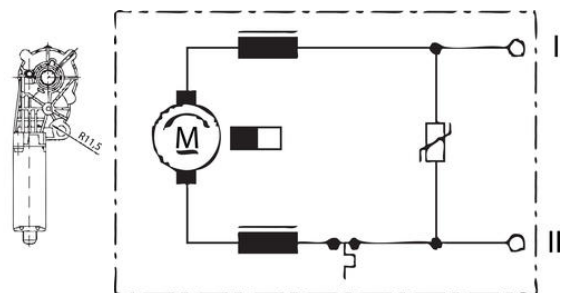
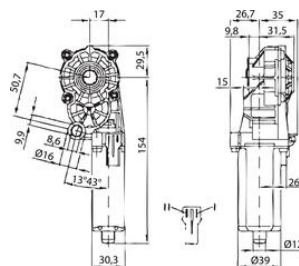
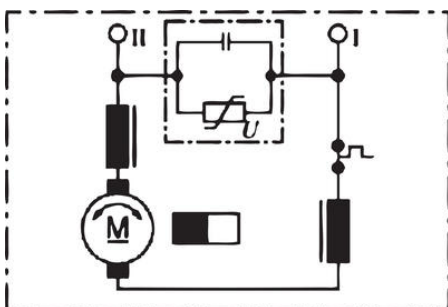


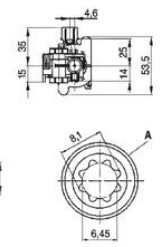
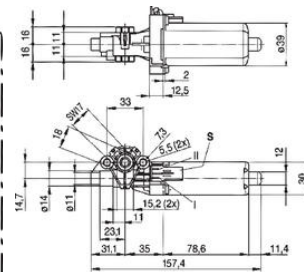
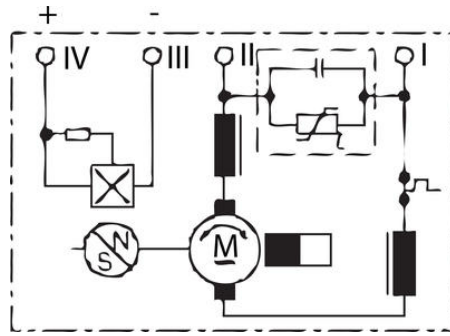
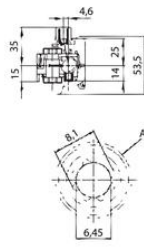
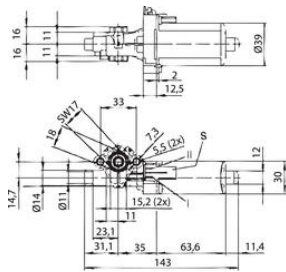
PRODUKTBeskrivning

AHC-serien med sina "platta" motorkroppar ger väldigt små inbyggdnadsmått. Möjliga applikationer är bl.a. handikapputrustning, medicinsk utrustning, låssystem, dörr- och fönstersystem etc.

TEKNISK DATA

Axeldiameter	6,4 mm
Effekt	8,8 W
IP-klass	IP50
Matningsspänning	12 V DC
Max. moment	1,05 Nm
Momentkurva	P1
NomineII hastighet	845 rpm
NomineII ström	5 A
NomineII moment	0,1 Nm





Inner spur gear, number of teeth 8, module 0.8
Matching plug housing Typo No. 368 182-1

