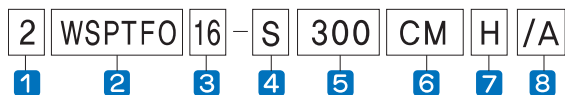


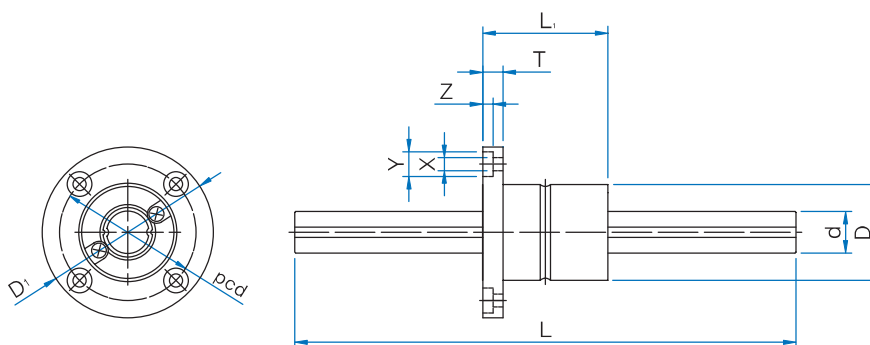
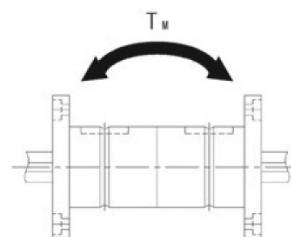
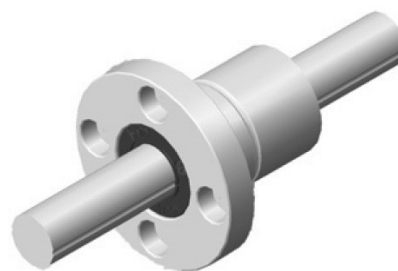
WSPTFO Type

Examples of model number formation



- 1 Q'ty of Nut 2 Part No. 3 Spline-shaft diameter
- 4 S:Solid, H:Hollow 5 Spline-shaft overall length
- 6 Preload : CT(Tight), CM(Middle), CL(Loose)
- 7 Accuracy symbol-Nomal(No symbol), High(H), Precision(P)
- 8 SUJ2(No symbol), Stainless steel(/A)

* When the grease nipple is necessary, please ask WON.



Unit : mm

Part No.	Main dimensions										
	Outer Diameter D	Allowable Tolerance	L ₁	D ₁	T	pcd	X x Y x Z	d	Allowable Tolerance	Length L	Max. length
WSPTFO 16	31	0 -0.013	50	51	7	40	45 x 8 x 4.4	16	0 -0.017	200 300 400	1000
WSPTFO 20	35	0 -0.016	63	58	9	45	5.5 x 9.5 x 5.4	20	0 -0.020	300 400 500 600	1000

Part No.	Basic load ratings		rating torque		Static load rating moment	Mass	
	C N	C ₀ N	T N·m	T ₀ N·m	T _M N·m	Nut g	Shaft g/100mm
WSPTFO 16	7060	12600	31.4	34.3	67.6	165	160
					393		
WSPTFO 20	10200	17800	56.9	55.9	118	225	250
					700		

1N≒0.102kgf

Note(1) As for the Static load rating moment T_M, the upside figures are for the value for one nut and the downside figure are for the values for 2 nuts to be closely adhered.